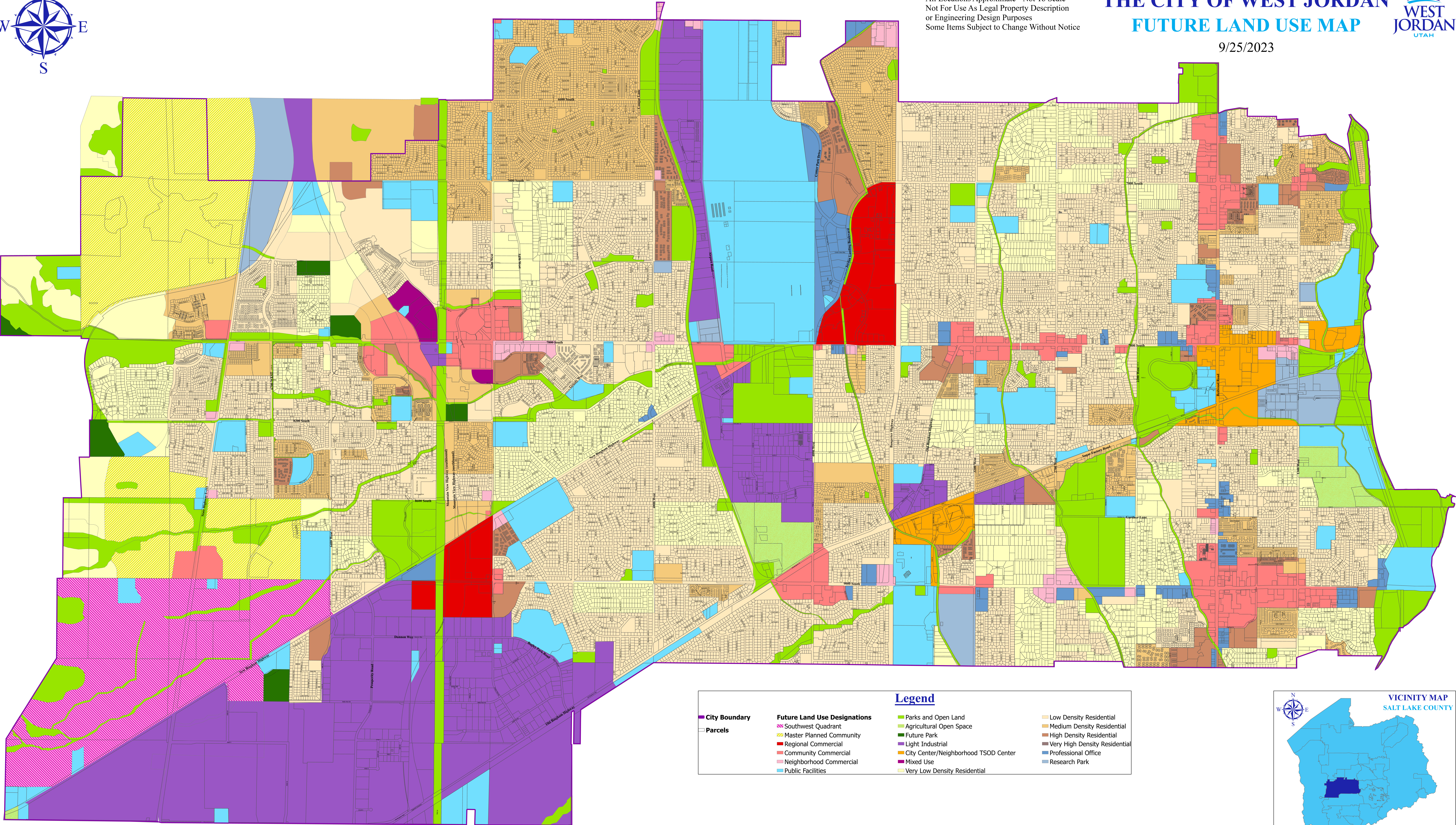


All Locations Approximate - Not To Scale
Not For Use As Legal Property Description
or Engineering Design Purposes
Some Items Subject to Change Without Notice

THE CITY OF WEST JORDAN FUTURE LAND USE MAP



9/25/2023



Legend			
City Boundary	Southwest Quadrant	Parks and Open Land	Low Density Residential
Parcels	Master Planned Community	Agricultural Open Space	Medium Density Residential
Regional Commercial	Community Commercial	Future Park	High Density Residential
Neighborhood Commercial	Public Facilities	Light Industrial	Very High Density Residential
		City Center/Neighborhood TSOD Center	Professional Office
		Mixed Use	Research Park
		Very Low Density Residential	

